

Capturem Extracellular Vesicle Isolation Kit (Maxi) Protocol-At-A-Glance

I. Introduction

This protocol is provided for the Capturem™ Extracellular Vesicle Isolation Kit (Maxi) (Cat. No. 635748), which is designed for the easy and rapid isolation of extracellular vesicles (EVs). The workflow (Figure 1) is a much gentler process than traditional ultracentrifugation, therefore minimizing potential damage to the EVs. This kit is compatible with various biological fluids, such as plasma, serum, urine, milk, saliva, and cell-conditioned media, and yields up to 10^{11} purified EVs per column.

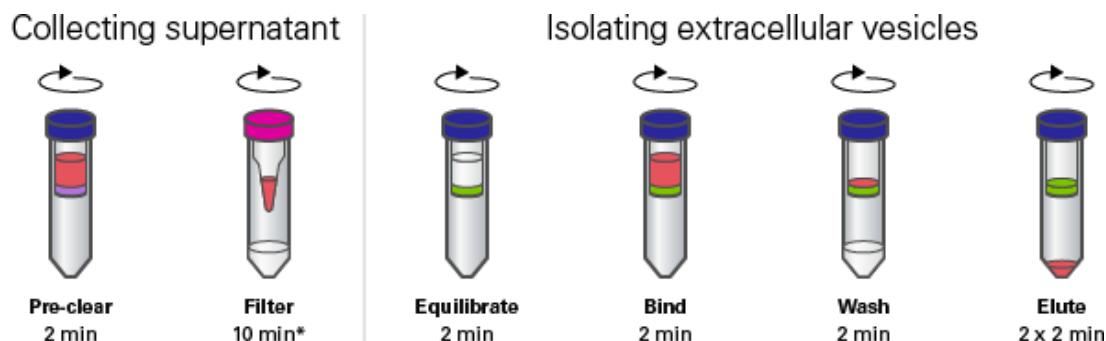


Figure 1. The Capturem Extracellular Vesicle Isolation Kit (Maxi) workflow can be completed in 30 minutes. *The Filter step uses an included filter unit with a 100-kDa molecular weight cutoff. Filtration time will vary depending on sample type and volume.

II. Materials and Reagents

A. Components

The following components are included in the kit:

- 8 each Capturem Extracellular Vesicle Isolation Maxi Spin Columns (with green inserts; in 50-ml collection tubes)
- 8 each Extracellular Vesicle Isolation Pre-Clearing Columns (with purple inserts; in 50-ml collection tubes)
- 8 each Amicon Ultra-15 Centrifugal Filter Unit, 100 kDa MWCO
- 50 ml Extracellular Vesicle Isolation Equilibration Buffer
- 50 ml Extracellular Vesicle Isolation Wash Buffer
- 10 ml Extracellular Vesicle Isolation Elution Buffer

B. Additional Materials Required

The following materials are required but not supplied:

- Collection tubes: two additional tubes (of varying sizes, depending on sample volume) will be required in Section IV.A to collect and transfer the sample supernatant. Three additional standard 50-ml collection tubes will be required in Section IV.B to collect the flowthrough, wash, and eluate samples. These tubes should be suitable for centrifugation up to 3,000g.
- PBS without CaCl_2 or MgCl_2

Capturem Extracellular Vesicle Isolation Kit (Maxi) Protocol-At-A-Glance

III. General Considerations

Samples must be pretreated before loading into Capturem Extracellular Vesicle Isolation Maxi Spin Columns. First, the sample supernatant must be pre-cleared using the supplied Extracellular Vesicle Isolation Pre-Clearing Columns to remove any large membrane fragments, apoptotic bodies, smaller cell fragments, etc. After pre-clearing, an Amicon Ultra-15 Centrifugal Filter Unit, 100 kDa MWCO is used to remove nonspecific protein aggregates, lipoproteins, cytokines, etc., resulting in EVs of higher purity. Alternatively, Proteinase K treatment can be used to remove the bulk of the protein from samples, but it may result in partial degradation of proteins exposed on the surface of the EVs. After filtering, samples are loaded into Capturem extracellular vesicle isolation columns at the recommended loading volumes (see Table I).

Table I. Recommended loading volumes for biological samples.

Sample*	Recommended column loading volume
Plasma, serum, milk, or saliva	1–5 ml
Urine or cell-conditioned media	>5 ml

*Since each column can bind a maximum of 10^{11} EVs, overloading the column will not increase yield beyond this point. For small-volume samples, please use Capturem Extracellular Vesicle Isolation Kit (Mini) (Cat. No. 635741).

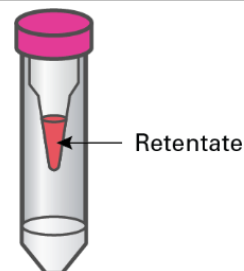
IV. Protocols

A. Collecting Sample Supernatant

1. Thaw the frozen sample in a water bath at room temperature until completely liquid.
2. Centrifuge at 3,000g for 10 min to remove any cellular debris.
3. Transfer the supernatant to a new collection tube (supplied by the user).
4. Load the supernatant onto the Capturem Extracellular Vesicle Isolation Pre-Clearing Column and centrifuge at 3,000g for 2 min at room temperature, or until all the solution passes through the column. This time may need to be extended for highly viscous samples or larger volumes. Save the collection tube containing the sample flowthrough for downstream analysis.

NOTE: A highly viscous sample may get clogged in the column. To prevent clogging, we recommend diluting highly viscous samples (like plasma and serum) 1:3 with PBS. If clogging still occurs, collect the resulting flowthrough and proceed to Step 5. Be aware that this may result in lower yield, as some EVs may remain clogged in the column.

5. Load the flowthrough from Step 4 onto an Amicon Ultra-15 centrifugal filter unit. Repeatedly centrifuge at 3,000g until retentate volume is ≤ 300 μ l. Transfer the retentate to a new 50-ml collection tube (supplied by the user). Add 200 μ l of PBS into the filter, and then wash off the remaining EVs by gently pipetting the PBS onto the sides of the filter a few times. Combine this supernatant with the already collected retentate. Adjust this sample volume to 20 ml with PBS.



NOTE: A highly viscous sample may get clogged in the filter units. If this occurs, collect the retentate and the supernatant from washing the filter membrane with PBS, then adjust the sample volume to 20 ml with additional PBS and proceed to Section B. Be aware that this may result in lower yield, as some EVs may remain clogged in the column.

Capturem Extracellular Vesicle Isolation Kit (Maxi) Protocol-At-A-Glance

B. Isolating Extracellular Vesicles

1. Equilibrate a Capturem Extracellular Vesicle Isolation Column with 5 ml Extracellular Vesicle Isolation Equilibration Buffer. Centrifuge at 3,000g for 2 min at room temperature, until all solution passes through the column. Discard the flowthrough.

NOTE: Extracellular Vesicle Isolation Equilibration Buffer contains ions that will interfere with ion-absorbance-based applications like Pierce BCA Protein Assay Kits, Bradford protein assays, NanoDrop readings, etc. However, the buffer is suitable for assays that are noncolorimetric or that do not involve ion absorbance, such as nanoparticle tracking analysis (NTA).

2. Load the filtered supernatant (up to 20 ml) onto the equilibrated Capturem Extracellular Vesicle Isolation Column that has been placed in a new collection tube (supplied by the user). Centrifuge at 500g for 2 min at room temperature, until all solution passes through the column. This time may need to be extended for highly viscous samples or larger volumes.
3. Place the Capturem Extracellular Vesicle Isolation Column in a new collection tube (supplied by the user) and add 5 ml of Extracellular Vesicle Isolation Wash Buffer to the column. Centrifuge at 500g for 2 min at room temperature, until all solution passes through the column. This time may need to be extended for highly viscous samples or larger volumes.
4. Insert the Capturem Extracellular Vesicle Isolation Column into a new collection tube (supplied by the user) and add 1 ml of Extracellular Vesicle Isolation Elution Buffer to the column. Centrifuge at 500g for 2 min at room temperature to collect the eluate.
5. Repeat the elution by reloading the eluate from Step 4 onto the same Capturem Extracellular Vesicle Isolation Column and centrifuging at 500g for 2 min at room temperature to collect the final eluate.
6. Eluted extracellular vesicles are now ready for downstream applications and analysis. See Section V for important information on storage and use.

V. Considerations for Downstream Applications and Analyses

A. Storing Isolated Extracellular Vesicles

Eluted extracellular vesicles can be stored at 4°C for up to 1 week. We recommend –20°C or –80°C for long-term storage. To avoid any damage or loss due to repeated freeze/thaw cycles, we recommend aliquoting the eluate into multiple tubes and only thawing the amounts needed for a given application.

B. Preparing for Downstream Applications and Analysis

If performing an analysis of protein content in the eluate, note that it will be necessary to look for markers specific to extracellular vesicles, as this protocol removes the bulk of proteins not specific to EVs, including carryover proteins like albumin.

This protocol elutes EVs using a phosphate-based buffer containing organic salts. Eluted particles can be directly used for physical particle analysis, such as NTA and labeling for cellular uptake assays. If your downstream application involves protein and/or RNA extraction, it will be necessary to first sonicate or desalt the eluted samples. Please see our FAQs for recommended steps and additional information about the EV isolation protocol.

Capturem Extracellular Vesicle Isolation Kit (Maxi) Protocol-At-A-Glance

Contact Us	
Customer Service/Ordering	Technical Support
tel: 800.662.2566 (toll-free)	tel: 800.662.2566 (toll-free)
fax: 800.424.1350 (toll-free)	fax: 800.424.1350 (toll-free)
web: takarabio.com	web: takarabio.com
e-mail: ordersUS@takarabio.com	e-mail: techUS@takarabio.com

Notice to Purchaser

Our products are to be used for **Research Use Only**. They may not be used for any other purpose, including, but not limited to, use in humans, therapeutic or diagnostic use, or commercial use of any kind. Our products may not be transferred to third parties, resold, modified for resale, or used to manufacture commercial products or to provide a service to third parties without our prior written approval.

Your use of this product is also subject to compliance with any applicable licensing requirements described on the product's web page at takarabio.com. It is your responsibility to review, understand and adhere to any restrictions imposed by such statements.

© 2020 Takara Bio Inc. All Rights Reserved.

All trademarks are the property of Takara Bio Inc. or its affiliate(s) in the U.S. and/or other countries or their respective owners. Certain trademarks may not be registered in all jurisdictions. Additional product, intellectual property, and restricted use information is available at takarabio.com.

This document has been reviewed and approved by the Quality Department.